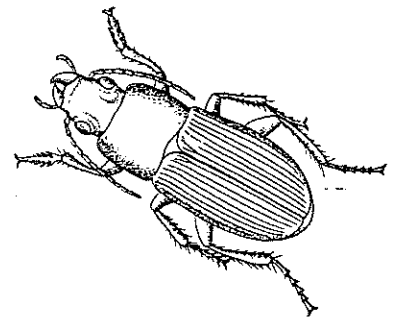
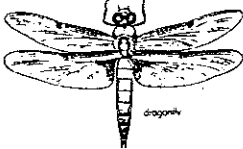
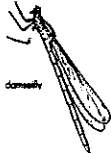


# Insect Bingo



Colored butterfly (you describe)  <hr/> <hr/>	holes in leaves	Insect with hard beetle-like case	oak galls in a tree
Insect with horizontal bars on its body	Insect on a flower	Dragonfly  	Any White butterfly
Pupating or larval insect	Sound of crickets	Ant	Water insect (You describe)  <hr/> <hr/>
Burrows or holes in trees	Damselfly  	Lady bug	Mosquito

